

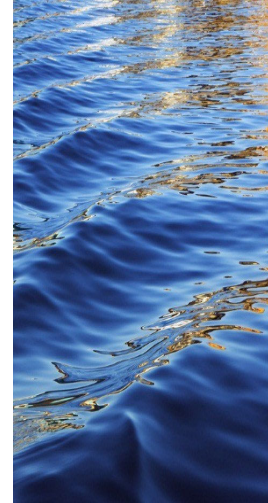
SERA-46



*Land Grant Universities Working
Collaboratively with the Hypoxia
Task Force*

Fall 2023 Hypoxia Task Force
Meeting

Fayetteville AR

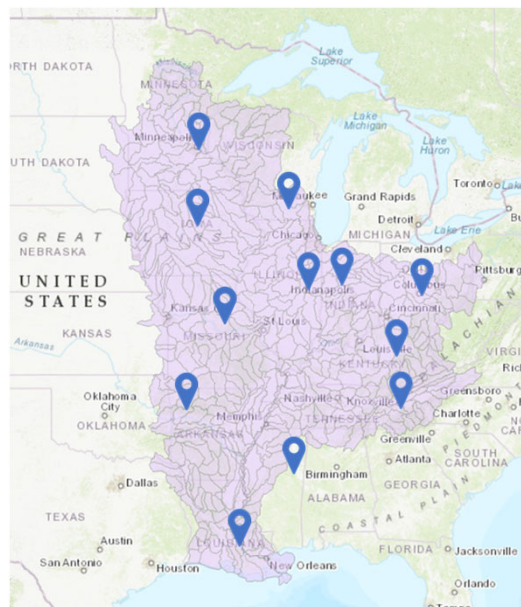


1



**Southern Extension &
Research Activities
committee number 46**

- USDA-NIFA coordinates multi-state efforts to address critical research & extension needs
- SERA-46 was initiated to address hypoxia in the Gulf of Mexico by way of nutrient reduction research and extension avenues throughout the MARB
- Formal MOU between HTF & SERA-46



2



SERA-46

Land-grant University
Extension & Research

Focus

Continuing Priorities:

1. Strengthening Networks
2. Conservation Systems Research and Outreach
3. Monitoring and Tracking of Progress

New funded Cooperative Agreement with EPA Gulf Hypoxia Program (anticipated Jan 1):

1. Communication & Coordination
2. Support networks in sharing results
3. Advance research in support of state Nutrient Reduction Strategies



Fall 2023 Update to Hypoxia Task Force, Fayetteville, AR

3

Land Stewardship Summit

EPA funded Farmer to Farmer

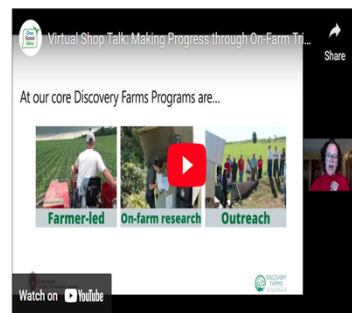
Elkhorn, WI
June 2022



Facilitate Basin-Wide Farmer Exchanges

- [Mississippi River Basin farmer-led exchanges](#)
- [Basin-wide watershed leadership summit](#)
- [Virtual Shop Talk](#)

Making Progress through On-Farm Trials
Wednesday, March 3rd, 2021



4

Outreach – Conferences & webinars



9th Annual Nitrogen: Minnesota's Grand Challenge & Compelling Opportunity Conference
MAYO CLINIC HEALTH SYSTEMS EVENT CENTER • MINNETONKA
Tuesday, February 7, 2023

Thank you to all of our Sponsors!

IN-PERSON OR ZOOM EVENT

Registration
Attend in-person at Mayo Clinic Health Systems Event Center or join via Zoom

15th Annual NUTRIENT MANAGEMENT CONFERENCE

TUESDAY, FEBRUARY 21, 2023
Holiday Inn and Suites, St. Cloud
75 57th Ave S, St. Cloud

Thank you to all of our Sponsors!

IN-PERSON OR VIA ZOOM!

Registration Required
Attend in-person at Holiday Inn and Suites or via Zoom

● Free admission and lunch for the first 100 attendees
● Virtual attendance is free, but requires registration

To register for in-person attendance: <https://nutrientmanagementconference.com>
To register to participate via Zoom: <https://zoom.us/j/9282222222>

Discovery Farms® Multi-state webinar
Tuesday, March 28, 2023

Join us for the 2nd annual Discovery Farms® multi-state webinar on March 28, 2023, at 9:00 a.m. CT / 10:00 a.m. ET. This free 3-hour webinar will feature presentations from Wisconsin, Minnesota, Arkansas, and Vermont. 3 Soil & Water Management CCA CEUs will be available. See below for presentation and speaker details. [Click here to register!](#)

Building a Network of Conservation Practices: Can we improve our water quality impact?
Lindsay Hargrett (Research Program Manager, Discovery Farms, AR)

The relationship between water quality and agricultural management practices is complicated, which is why there is not just one answer to the issue. There is promise in stacking conservation practices together in order to address sediment, particulate phosphorus and dissolved phosphorus losses. Stacking of these practices could allow for a more holistic approach to the water quality issue by addressing physical, chemical, and biological aspects together.

More Than a Pipe
Tim Reuter (Discovery Farms Coordinator, MN)

Much of Minnesota's agricultural soil is highly productive but poorly drained. Subsurface tile drainage has been used for decades to provide adequate soil drainage and increase agricultural productivity. Understanding the tradeoffs of this important practice is imperative to best manage agricultural production and water quality in Minnesota.

Expanding the Arkansas Discovery Farms Program
Mike Daniels (Co-leader, Discovery Farms Program, AR)

Since the inception of the Arkansas Discovery Farms Program the focus has been on water quality, but has expanded to address other natural resource concerns, including water use and conservation, soil health, sustainability and climate change. They plan to work with the University of Arkansas Pine Bluff to develop a Discovery Farms Educational Center on the 50-acre campus farm where undergraduate and graduate students can get hands-on experience in monitoring natural resources under different agricultural systems to enhance workforce development in conservation. They also plan to use the center for K-12 education, by hosting field trips especially for underserved populations.

Managing Nitrogen in Grass Fields: Maintaining nutrient levels through innovative management practices
Jennifer Davis (Project Director, Discovery Farms, VT & Annual Fellow, University of Vermont Extension)

With high fertilizer costs, it is important to manage nitrogen efficiently in order to reduce input costs without sacrificing yields. In Vermont where perennial forages for dairy is the primary production system, farmers have access to livestock manure, which is an excellent source of nutrients like nitrogen, but must be managed properly to maximize availability and minimize losses. Practices such as manure injection and urease inhibitors can be valuable strategies for retaining nitrogen in grass fields. These practices may also reduce potential for nutrient runoff and protect water quality while reducing input costs.

Forested Stream Buffers Virtual Field Day

MARCH 24, 2022

7 PM ET | ZOOM

Learn about the importance of forested stream buffers on the landscape, how to establish and manage them, and how to incorporate them into your land management plans.

Visit <https://forestry.ca.uky.edu/forested-stream-buffers>

OR SCAN TO REGISTER

University of Kentucky College of Agriculture, Food and Environment Cooperative Extension Service

Land Stewardship Summit
EPA funded Farmer to Farmer
Elkhorn, WI
June 2022

Fall 2023 Hypoxia Task Force Meeting, Fayetteville, AR

5

Publications and Newsletters



LOUISIANA CONSERVATION & COMMODITY UPDATES
JULY 2023, ISSUE-7

USDA ANNOUNCES LOAN RATES EFFECTIVE JULY 3, 2023

The United States Department of Agriculture recently announced the funding rates for operating and ownership loans. Farm operating loans (direct) have an interest rate of 4.5%, and farm ownership loans (direct) have an interest rate of 4.875%. Emergency loans have a 3.75% interest rate, and commodity loans have a 6.125% interest rate.

DROUGHT CONDITIONS

Drought conditions have worsened across the western region including Nebraska, Idaho, Oregon, Oklahoma, Washington, Wyoming, and Utah. Within the southern region, Texas experienced dry conditions with deteriorating conditions south of the Panhandle region. Over 45% of the cotton crop in representative poor to poor conditions.

U.S. DROUGHT MONITOR

Source: Droughtmonitor.nsl

LOW CORN PRODUCTION FORECASTS

In the latest World Agricultural Supply and Demand Estimate report released by the USDA in July 2023, corn production is pegged at 15.52 billion bushels with a yield of 177.5 bushels per acre. For soybeans, yield is expected at 25 bushels per acre with 81.7 million planted acres. Overall, the ending stock forecasts for corn, soybeans, and wheat are assumed to be healthy.

US CORN AND SOYBEAN EXPORTS

Recent events indicated low corn and soybean exports due to higher prices, and large commodity supplies from

South America: Current corn and soybean exports stand at a four-year low.

U.S. Corn Export Sales, Near Marketing Year

Source: Reuters

The week ending July 13 witnessed corn sales of 492,000 tonnes, the highest since November last year. The number stood at 760,000 tonnes for soybeans. These sales were mostly driven by Mexico. Soy exports to China were the lowest in 16 non-trade-year years.

THE DECLINE IN CATTLE INVENTORY

As of 1st July 2023, there were a total of 95.9 million cattle and calves in the US. This number was computed after conducting 15,600 farm surveys in the first half of July. Beef Cows totaling 29.4 million were 2% lower than last year. There were over 110 million cattle heads in 1998 and the industry has seen a declining trend thereafter.

SOYBEANS OF OTHER COLORS

USDA's agricultural marketing service published a final rate that officially removes Soybeans of other

Tap Your Potential

A Training to Grow Farmer Leadership in Watershed Management

Helping outreach professionals and educators empower farmers to get more involved in water quality and soil health improvement in their local watersheds.

FACILITATOR'S GUIDE

FARMER LEADERSHIP IN WATERSHED MANAGEMENT
MISSISSIPPI ATCHAFALAYA RIVER BASIN

Ten Ways
to Reduce Nitrogen Loads from Drained Cropland in the Midwest

6



One Good Idea is a clearinghouse of videos and podcasts that feature farmers sharing their experiences implementing soil and water conservation practices to help other farmers discover good ideas to try on their operations.

OUR MISSION

One Good Idea helps farmers improve their soil, land, and profitability by providing a platform for sharing practical, evidence-based information that accelerates knowledge transfer between land stewards and demonstrates how farmers are making a difference for their operations, their communities, and the world.

VISIT GOODIDEAFARM.ORG

Subscribe to get emails and follow us

facebook.com/goodideafarm

@GoodIdeaFarm

#WhatsYourGoodIdea

Contact: Jenny Seifert, Watershed Outreach Specialist | UW-Madison Division of Extension, North Central Region Water Network | jenny.seifert@wisc.edu

Web-based Outreach

The Confluence for Watershed Leaders

The Confluence for Watershed Leaders is a community and collaborative of people working for healthy watersheds in the Great Lakes, Mississippi River, and Red River Basins of the U.S. Midwest and Mid-South.

It is for watershed and conservation professionals, watershed educators, and engaged farmers and landowners to connect, learn, and increase their success in achieving clean water goals.

CURRENT ACTIVITIES

Life Hacks over Lunch: A Meet-up Series for Watershed Professionals

This free, virtual meet-up series is a peer-learning opportunity for watershed professionals to share ideas and advice for solving real-life challenges of watershed projects. [More >>](#)

Online Community

Our free online community is for watershed professionals and engaged farmers who want to connect with peers, seek and share advice and opportunities, and feel part of something bigger. As of October 2020, there are over 240 community members, representing at least 30 states. [More >>](#)

Watershed Leadership Curriculum Development

Collaborators develop curricula that equips watershed leaders with the competencies they need to achieve progress. Curriculum development to date has focused on cultivating farmer leadership in watershed management. [See an example >>](#)

Human Capital Blog

Our blog shares practical insights and stories that build human capital for healthy watersheds. [More >>](#)

WHAT WE DO

To achieve clean water goals, we need to invest more in people. The Confluence builds the capacity of watershed leaders and amplifies their stories to bring successful watershed management to scale.

We are building human capital.

The Confluence creates a central place for watershed leaders to access training, resources, and peer learning opportunities that can build their skills, knowledge, and confidence – their human capital. We also accelerate innovation in training by cultivating collaborations between watershed educators.

We are building a community of practice

The Confluence connects watershed professionals, farmers, and others involved in watershed management, so they can learn from each other, avoid recreating wheels, and feel part of something bigger.

We are building visibility for watershed leaders

The Confluence amplifies the stories, successes, and needs of watershed leaders to showcase their value in solving our water challenges and help them feel seen and supported.

WHO WE ARE

We are a collaboration of Extension, nonprofit, and government professionals who are passionate about empowering people to make change for clean water, healthy landscapes, and thriving communities. [Learn who's part of the collaboration >>](#)

VISIT WATERSHEDLEADERS.ORG


Contact: Jenny Seifert, Watershed Outreach Specialist | UW-Madison Division of Extension, North Central Region Water Network | jenny.seifert@wisc.edu

7

More Information

<http://northcentralwater.org/sera-46/>

<https://www.epa.gov/ms-htf/hypoxia-task-force-partnerships>



SERA-46
Land-grant University
Extension & Research

Fall 2023

Hypoxia Task Force Meeting, Fayetteville, AR

8